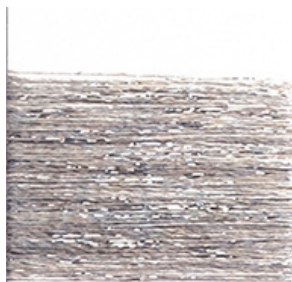


**MICA LINO** Composizione: 85% LINO (NM 1/39000) - 8% POLIESTERE - 7% NYLON  
Titolo finale: NE 20/1

Costruito con 1 Capo LINO 1/39000 tinto da NS. CARTELLA LINO + 1 Capo LAMÈ ORO/ ARGENTO o COLORATO + legatura NYLON GREGGIO



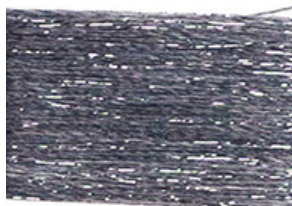
LINO MEL./ SILVER



MORO MEL./ GOLD



ROSSO 48/ RED



MARE MEL. SILVER



NERO/ GRAY

