

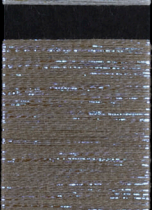


**EREMO G109**

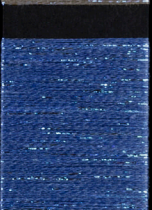
**SOVRATINGIBILE**



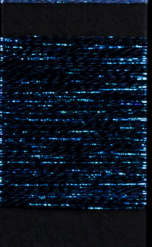
**METALLO G150**



**WALNUT G33**



**LAPIS G91**



**INCHIOSTRO**



**TITOLO FINALE NE 22.5/1**

**FILATO 74% COTONE - 17% POLIESTERE - 9% NYLON**

**COMPOSIZIONE: 1 CAPO COTONE 30/1 TINTO DA NS. CARTELLA NATURALI  
+ 1 CAPO LAME' IRISEO + LEGATURA NYLON GREGGIO**

**TITOLO FINALE NE 32/1**

**FILATO 64% COTONE - 24% POLIESTERE - 12% NYLON**

**COMPOSIZIONE: 1 CAPO COTONE 50/1 TINTO DA NS. CARTELLA NATURALI  
+ 1 CAPO LAME' IRISEO + LEGATURA NYLON GREGGIO**