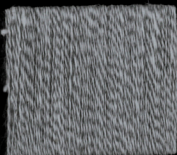
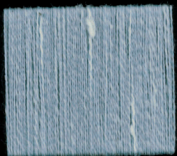


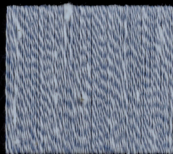
GERANIO 140



MEL. 8124



ANICE 145



AVIO 75

TITOLO FINALE NE 15/1 (NM 1/25000)

FILATO 100% COTONE (BOTTONATO NE 24/1 + COMPACT NE 40/1)

**COMPOSIZIONE: 1 CAPO COTONE 24/1 BOTTONATO + 1 CAPO COTONE 40/1
DA NS. CARTELLA NATURALI**

TITOLO FINALE NE NE 13/1 (NM 1/22500)

FILATO 100% COTONE (BOTTONATO NE 24/1 + COMPACT NE 30/1)

**COMPOSIZIONE: 1 CAPO COTONE 24/1 BOTTONATO + 1 CAPO COTONE 30/1
DA NS. CARTELLA NATURALI**